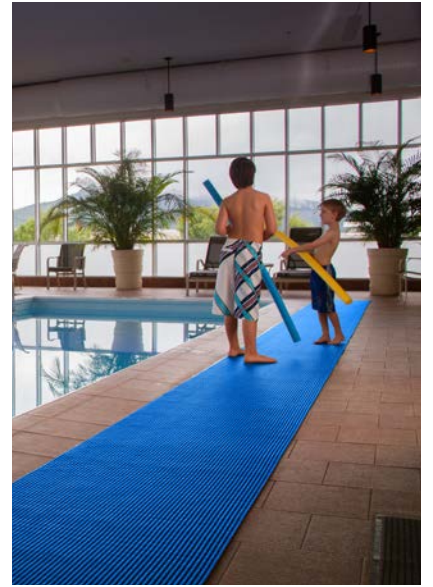
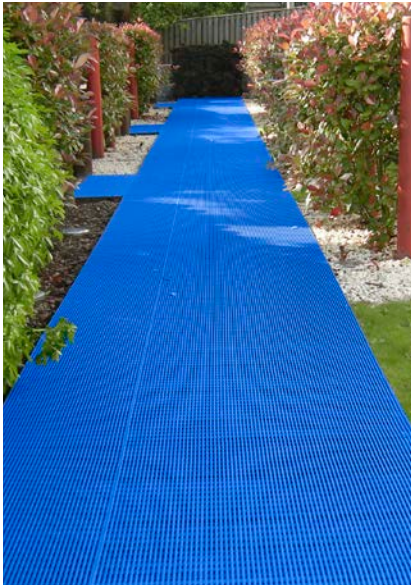


# WETMAT - Technical Guide



## I. GENERAL CHARACTERISTICS

**Product: WetMat, the non-slip mat system.**

**WetMat is a mat system destined for wet areas of high traffic.  
This non-slip mat system is ideal to secure pools, hot tubes or lockers.**

## SUMMARY

- I. General Characteristics
- II. Applications and installation conditions
- III. Resistance tests
- IV. Warranty
- V. References



## **DIMENSIONS :**

**Width :** 1 m or 1.22 m

**Length :** Comes as roll out matting system of 10 meters length connectable

**Weight :** 5,5 kg/m<sup>2</sup>

**Couleur :** Blue Ocean

**Material :** 100% recyclable and flexible PVC

## **Advantages :**

- Non-slip mat system
- Two-layer construction and channeled underbars
- Easy to clean
- Modular: easy to cut
- Anti-microbial and anti-fungal additives
- Suitable for indoor and outdoor pools (UV resistant)
- Comfortable for barefoot users
- 100% recyclable and flexible PVC
- Easy to remove, to wind, to store



## **II. APPLICATIONS AND INSTALLATION CONDITIONS**

WetMat is an ideal mat system suitable for wet areas of high traffic. This non-slip mat system is ideal to secure your pools; hot tubes, and lockers. WetMat can be used both indoors as well as outside. WetMat can be installed on any type of floor: tiles, concrete, rough grounds and soft grounds (like sand). WetMat is resistant to extreme weather (from -23°C to + 60°C).

## Installation

WetMat is easy to install. You must install the mats side by side. We offer the length as request.

## Maintenance and after-sales service

WetMat is anti-microbial and anti-fungal but regular cleaning is also recommended to remove dirt. Below some steps that must be followed to clean the mats:

- Check WetMat is free from clothing fibers and dirt.
- Clean WetMat with a product suitable for aquatic centers and pools.  
Use a sprayer or mop. Use a stiff deck brush to work the product into the mat.  
The mats should be rolled up each time you clean the surface. For the good maintenance of your WetMat, we do not recommend that you fold, pull or drag the mat.
- Any type of steam cleaner can be used.

Frequency of cleaning will depend on the traffic level on the surface. It is possible to clean the back of the mat. You just must roll the mat up and then roll back out. Use the same cleaning instructions.  
Use the cleaning fluid in the right quantity according to the manufacturer's recommendation.

## III. RESISTANCE TESTS

### ***Slip resistance:***

ASTM F 1677 – Dry/Wet: 0.9/0.7

### ***Din 51130:***

Classification C

### ***Fire:***

EN13501-1: 2007-Cfl-S1

### ***UV Light:***

Resistance to PVC degradation

### ***Chemical:***

Resistant to most acids, alkaline and oils.

### ***Reversion***

***Thermoplastic shrinkage can result in size reductions up to 2%. This may be accelerated in hot environments.  
We recommend that you do not fold, pull and drag the mats when moving.  
We recommend that you roll the mats during all transportation.***



## IV. WARRANTY

*Accessrec Europe offers a two (2) year warranty starting at the date of your Purchase Order.*

**Warranty covers:**

- Manufacturing defects of the product. In that case, the mats will be repaired or replaced. Manufacturing defects must be reported within 2 months of the reception of your order.
- Alterations related to normal use are not considered as manufacturing defects. Damages caused by vandalism or the passage of vehicles are not covered by the warranty.

## V. RÉFÉRENCES



WetMat is installed in a locker in St-Nicolas de Port, France



WetMat is installed to secure the edges of a pool in Alsace, France